

Harling House 47-51 Great Suffolk Street SE1 OBS

Rental Options:

Fully Managed: From £42,200 pcm



A former warehouse in the heart of Southwark, with a commanding location at the junction of Union Street and Great Suffolk Street, featuring Gordon Ramsay's Bread Street Kitchen on part of the ground floor.

Harling House is located within two minutes-walk of Southwark underground and ten minutes from Waterloo, London Bridge and Blackfriars stations. The building is in the heart of London's thriving Southbank district, offering a wide variety of local amenities from bars, restaurants, coffee shops, galleries and London's famous Borough Market.

Key Facts

Fully-Managed:
£42,200 pcm

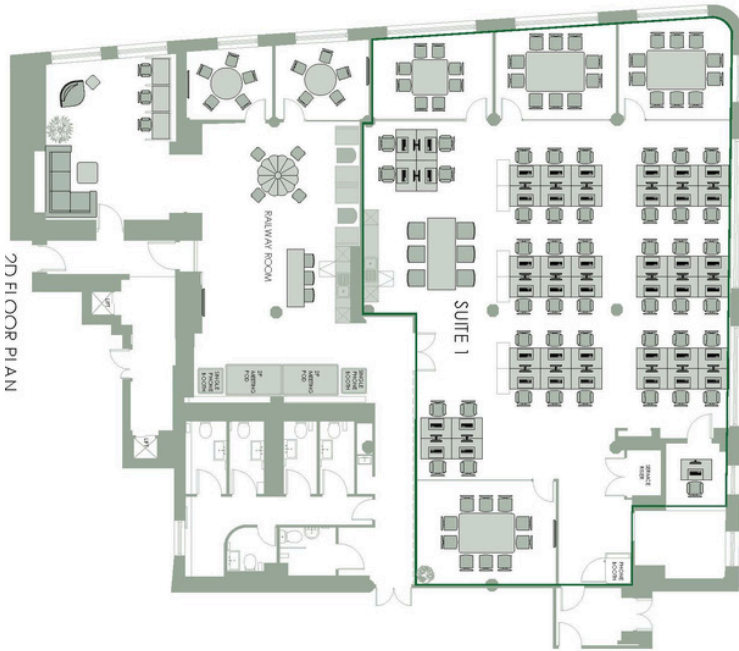
UNIT SIZE: 2,892 sqft
DESKS: 30-50
RENT: From £42,200 pcm

BUILDING SIZE: 73,575 sqft
BUILDING FLOORS: 5
UNIT: 2ND FLOOR NORTH



Highlights of your New Office:

- Own private floor
- Communal meeting rooms and break out spaces
- Workstations plus kitchen, meeting room and informal break out areas
- Personalised fit-out and furniture with your choice of configuration
- Excellent natural light
- Showers and bike storage
- Reception service



44 PERSON OFFICE
OTHER LAYOUTS AVAILABLE

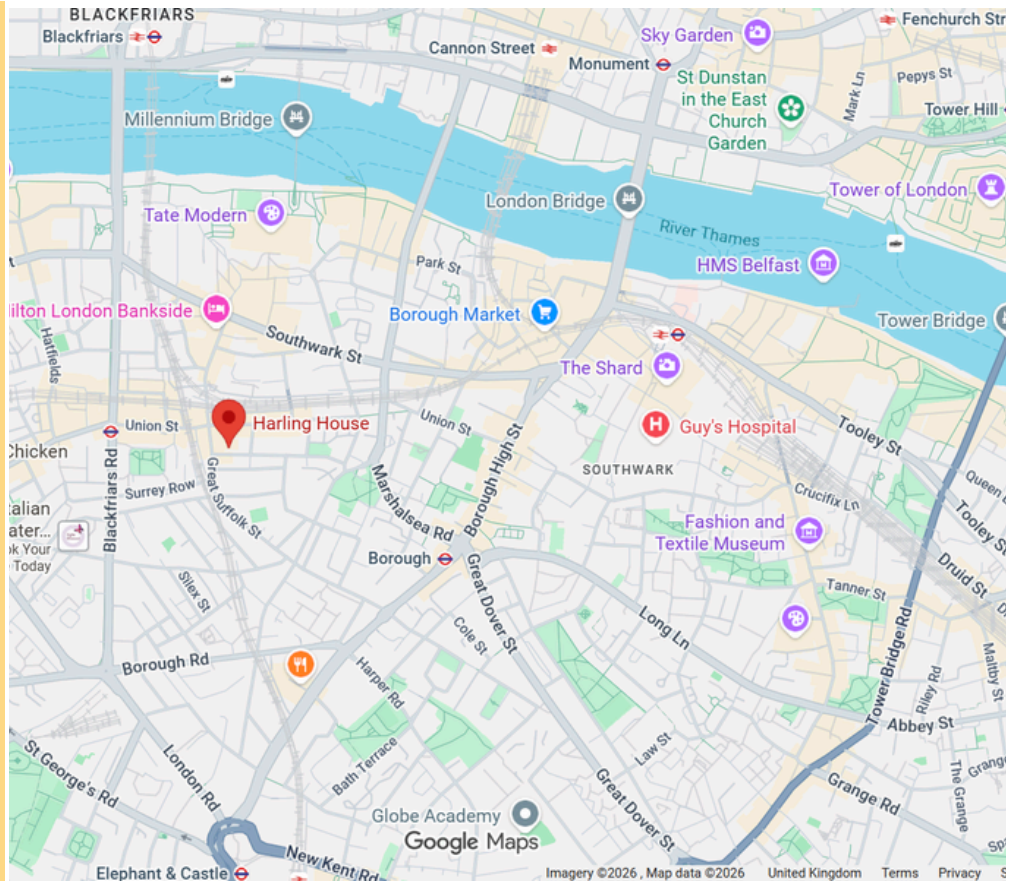
Tailor-made, turn-key office solution giving you your own private suite, with your choice of layout, furniture and dedicated IT services.

What's included in the price

Service

Managed

Rent
Rates
Service Charge
Furniture & Fitout
Internet Office Ready
Utilities
Building Reception
Customer App
Customer Services Manager
24/7 Helpdesk
Cleaning
Consumer Supplies
Tech Support
Repairs & Maintenance
Health & Safety
Misc Items
Coffee Machine



Rent/ pcm

£42,200pcm

Harling House,
47-51 St Great Suffolk Street
SE1 OBS

TEL: [020 7930 5724](tel:02079305724)

HELLO@HARLINGHOUSE.ME

